



Riverbend Campground

Riverbend Campground
48033 370 Avenue East
Okotoks, Alberta T1S 1B5
Phone: (403) 938-2017
Reservations: 1-866-938-2017
www.riverbendcampground.ca

2013 Newsletter

Welcome to our first newsletter in a few years, we hope everyone had a great winter and we're all looking forward to a great camping season. 2012 turned out to be a great year for **Riverbend Campground** as the weather cooperated and we had a busy year. The work on the Sheep River held up great in the June Rains and we know you can't beat Mother Nature so we have to go with the flow.:-)

We're very excited this year as we're continually looking at ways of improving your **Riverbend Campground**.

Some of the changes will be on the following pages.

We have made a few minor changes on the Rental Contract this year, so when you come in to pay for your lot rental by May 1, we ask you to read the contract carefully, ask questions if you do not understand certain sections. Keep your copy handy and refer to it when necessary.

All info needs to be updated including e-mails, as we can pass on info as it comes up more readily. Prompt payment is rewarded with guest passes and Mini golf passes.

But the place which you have selected for your camp, though never so rough and grim, begins at once to have its attractions, and becomes a very centre of civilization to you: "Home is home, be it never so homely."
~Henry David Thoreau



Sheep River



Reduce Reuse Recycle

We truly applaud the efforts of all the campers that have embraced our recycling program to reduce our Carbon Footprint. Through your efforts, you not only reduced the volume of garbage that must be taken to the landfill but have also made a difference by putting to good use everything that you have placed in the appropriate containers. Plastics, tin cans, newspaper and non-refundable glass containers are taken to the Okotoks Recycling Center.

These items and the proceeds are put to good use by contributing to local community endeavors. The pop cans, pop bottles and other refundables are taken to the local bottle depot. There all of these items are sorted and recycled. **ALL THE PROCEEDS** from this effort go to various charities listed in the Office. Just a reminder that all non-refundable containers must be rinsed and labels removed in order to be accepted at the depot.

Inside this issue:

Stampede Break-	2
Propane sales	2
Water consumption	2
Dog Digest	2
Yearly Prices	3
MD Foothills	3
Golf Carts	3
Changes and Improvements	4

Seasonal

*There will be our normal camper site moves, with seasonals changing or moving and with that we have a list of new seasonal campers coming in to make **Riverbend***

Campground their summer home. New seasonal campers will be paying a \$200 deposit for clean-up if anything is left. So if you are moving out please leave your site the same way as you got it as it is your responsibility to leave your site clean.

Like us on Facebook

Propane Sales

Our hours for refills are posted at the store and at the washrooms 11AM to 5 PM. If you want your propane bottle refilled, please pay at the store then drop-off your propane bottles at the refilling station. Make sure you have your bottle marked with your lot number or name, we will not refill unidentified bottles. If we have the available staff we can possibly do it when time permits. If not available you will have to take it into town for refilling at one of the several stations that fill up propane bottles.

Looking for a Stone Mason or Brick Layer for some work.

When the Well is dry we know the Wealth of Water Benjamin Franklin



Dog Digest

All dogs are to be registered for the year \$20.00 per season.

Dogs are to be leashed or "under control" at all times

Dog droppings are to be picked up by you.

Dogs are NOT to be left alone at any campsite at any time.

Dog Statistics

- Dog bites cause an average of 18 deaths per year.
- Almost \$165 million is spent on dog bite related injuries requiring medical treatment a year
- Children comprise 60% of all dog bite victims. 73% were bitten on the face, neck and/or head.
- On average, 334,000 people/year visit hospital emergency rooms because of a dog related incident.

Our Park is not a Bank, please don't let your dog leave a deposit.

Water Consumption

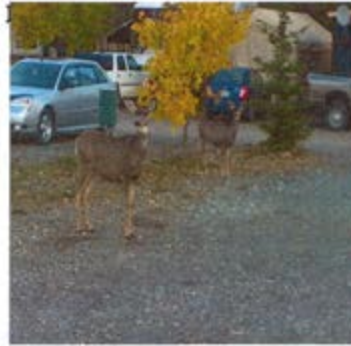
Your cooperation is once again requested to conserve water as our system will get overwhelmed if too many people are trying to water at the same time ie Friday evenings.

The municipality is enforcing Riverbend to put in a Chlorinated watering system. We had a system in the winter working and trying to maintain safe levels of chlorine. But come summer when water is used at a much larger volume, we will have to change the system with a large holding tank and a different dispersion system. So please use common sense when using our valuable water as they don't make it anymore. ;-)

-Keep a jug of water in the fridge at all times

-Your lawn only needs 1" per week.

-Ensure you have no leaks in hoses or taps.



Several species of wildlife make Riverbend Campground home

Earth and sky, woods and fields, lakes and rivers, the mountain and the sea, are excellent schoolmasters, and teach some of us more than we ever learn from books.
John Lubbock

Speeders

WE WILL NOT TOLERATE SPEEDING

Speeding is the campground starts at the gates, and anyone caught speeding will be evicted immediately and refused entry.

The speed is there for the safety of all patrons especially children. The speed limit through out the campground is **15km/hr** at all times with no excuses. We have a speed detector warning of excessive speeds.



We will be hosting our Annual Stampede Breakfast on July 13

Good News

The 2013 Rates have remained the same as last year. Prices include GST

Tenting	\$25
Power and Water	\$35
30 Amp Service	\$40
50 Amp Service	\$45
Pets	\$2
Day Pass Vehicle & Driver	\$2
Passengers (each)	\$1
Pets	\$1
Coin Showers (5min)	\$1

Seasonals (Due May 1st)

Power, Water, Sewer	\$1800
Pet permit (Each)	\$20
2 nd Vehicle Permit	\$20
Winter Storage (Due Nov 1 st)	\$250

All other rates please check in to the Office

Store-Office Hours

May, June, September October	Mon-Thur	9-11 and 3-8
	Fri- Sun	9AM til Dark
July-August	All week	9AM til Dark



M.D. Foothills

Riverbend Campground continues to be one of the best campgrounds in Southern Alberta, it has many amenities other campgrounds cannot provide. So we strive to continue to make camping the most pleasant outdoor experience possible. So if you have any ideas to make it better please email Riverbend and you will get a reply. And please Like us on Facebook. Thanks Manage-

Golf Carts

Riverbend Campground has several people with Golf Carts, old, new, electric, gas, pimped, clunkers, we are asking people to be more aware that the unnecessary driving of these carts add to noise and air pollutions for people who are looking for a quiet place to camp. If you **MUST** drive the carts, go from point a to b and not just out for a leisure drive, walking is a more healthy, quiet relaxing way to get around. The driver must be a licensed operator and you must have insurance for liability as you are responsible for any damage or injury. The campground has a speed limit that must be adhered to for vehicles and Golf carts to keep the dust down and impaired driving is also in effect in any motorized vehicle. This info is on your Contract and license for the Golf Cart.



Fly Fishing the Sheep river for Trout or White Fish but be sure to have your Alberta Fishing License

The M.D of Foothills specifies that the only structures allowed on lots are storage shed (max. 80 sq ft) and or decks (max 144 sq ft) Any decks or shed that are to be built must have prior consent from campground management. They are not to be attached to your unit and your unit may be placed in such a manner on your lots that allows for quick access or "getaways". We prefer units to be lengthwise on the lot rather than across the lot or on an angle (of course there are some exceptions) Make sure you leave enough room next to your electrical post/server line so that we can read the meter every month. In some sections, we still have to empty your sewer into the "honeywagon". Leave enough room for the truck to get close. Keep your lot tidy! We do not want to see piles of "stuff" stacked up. Fridges, stoves, furniture, old vehicles, etc. Are not allowed to be stored on your lot. If you have wood to store, keep it tidy.



Riverbend Campground



Phone: 403 938 2017

**Be Sure to
check out
our new
WEBSITE**

**QUADS AND OFF ROAD
MOTORCYCLES NOT
ALLOWED IN THE
CAMPGROUND OR RIVER**



FIRES MUST BE OUT BY 1am

The Municipality of Foothills for the safety of everyone puts on fire bans. We have no control or say in the length of restrictions Please Abide by any ban in Place.

Cold Ashes can be put into the grey barrels at the recycling areas, and ensure that there are no nails or screws for the safety of staff removing them.

Curfew

ITS DARK, DO YOU KNOW WHERE YOUR CHILDREN ARE?

Many problems occur after dark with unsupervised children. Adult campers are held responsible for their children and the children of their guests. After dark ALL children must be at their own campsite!

No Exceptions

SEWER EMPTING

Please note that the sewers are emptied twice a week. Sewer days are Monday and Friday. There will be an additional charge for any sewer that needs to be emptied more than twice a week.

Guest Passes

Day Guest Passes are just that DAY GUESTS They are not to stay overnight without informing the Front Office. If guests stay without permission the onus falls on the Contract holder and may suffer consequences up to **EVICTION.**

Staff Privacy

When our staff members are off Duty please respect their privacy And do not disturb them unless Its an emergency. Please call the office at 403 938 2017

Volleyball and Tether Ball poles to be added this summer.

Exciting changes and Improvements

We are very excited this year for changes and improvements to

Riverbend Campground. Staffing should stay pretty well intact this year, with the exception of Marilyn retiring and working the store and Dwayne taking a leave of absence from work and learning the business this year.

The first project is to modernize our website, and more social networking.

Come April we are putting in a new maintenance building and taking down the old garage

We will continue in Spring to be bring down trees from the tree farm and placing them through out the Campground.

The nature path that runs along the hill, creek and bird sanctuary will be extended and maintained to the Lake on the West end of the Campground. This will make for a nice quiet relaxing walk or ride and several spots to pick berries, and watch

Wildlife.

The Lake in the last few years are being taken over from weeds as its not getting enough oxygen after the 2005 flood, filling it with silt.

We are going to install an Aeration system, with underwater aerators and fountains. We hope to one day to drain and dredge the lake to return it to its natural beauty.

Joe Bines has volunteered to work with us as the Entertainment Director to plan fun events for kids and



adult. We will keep you posted.

The owners of any dog is liable for any damages suffered by any person who is bit-

COMPOST AREA

The campground has 2 compost piles, one at the North side of parking lot by entrance and the other at the East End near the entrance to the Nature Path. Please only leaves and grass clipping as branches and other material won't compost yearly.



Kayaking on the Lake